

# Sprinter 06 >

# Spare Parts

Oil filter Element 2009 >



Oil Filter Element >2009



Fuel Filter >2009



Fuel Filter 2009 >



Fuel Filter Element 2009>



Air Filter Element



Glow Plug



Dual Mass Flywheel



Clutch Kit



<p>Clutch Release Bearing &amp; Slave Cylinder</p>	 A clutch release bearing and slave cylinder assembly. It features a central bearing with green rings, mounted on a metal housing with two mounting brackets on either side.
<p>Low Saps Engine Oil</p>	 A 5-liter plastic jug of Total Quartz Red Neo 5W/30 motor oil. The label is silver and red with the Total logo and product name.
<p>Front Anti-Roll Bar Bracket Modified</p>	 A black, modified front anti-roll bar bracket. It has a curved shape with a central hole and two mounting points on the ends.
<p>Front Anti-Roll Bar Main Bush</p>	 Two black front anti-roll bar main bushes. One is shown from the side, revealing a central metal pin, while the other is shown from the front.
<p>Front Anti-roll Bar drop Link</p>	 A front anti-roll bar drop link. It is a metal link with a ball joint at one end and a threaded end with a nut at the other.

<p>Rear Anti-Roll Bar Bracket Modified</p>	 A dark grey, cast metal bracket with a curved shape and two circular mounting holes.
<p>Rear Anti-Roll Bar Bush</p>	 A black, cylindrical bush with a white, textured sleeve on one side and a central metal rod protruding from the top.
<p>Rear Shock Eye Bush</p>	 A black, cylindrical bush with a central hole and a slightly flared top edge.
<p>Front Strut Protective Sleeve</p>	 A black, cylindrical sleeve with a threaded section at the bottom and a smooth section at the top.
<p>Front Suspension Ball Joint</p>	 A ball joint assembly featuring a white plastic housing, a metal ball stud, and a metal nut.

<p>Steering Track Rod End</p>	 A black steering track rod end with a silver-colored nut and a tapered end.
<p>Steering Rack Tie Rod</p>	 A long, black steering rack tie rod with a ball joint at one end and a tapered end at the other.
<p>Front Brake Disc</p>	 A silver-colored front brake disc with a central hub and several mounting holes.
<p>Front Brake Pad Kit</p>	 A black front brake pad kit with a metal backing plate and a central mounting point.
<p>Brake Pad Wear Sensor</p>	 A black brake pad wear sensor with a green plastic cap and a metal mounting bracket.

Front Brake Flexible Hose



Rear Brake Disc



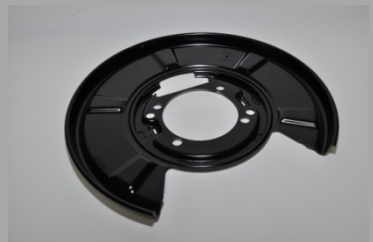
Rear Brake Pad Kit inc. Wear Sensors



Rear Brake Adjusters



Rear Brake Back Plate



Brake Caliper Slide Repair Kit



Brake & Clutch Pedal Rubber



Propshaft Universal Joint








Driveshaft Centre Carrier Bearing



Plastic Wheel Trim



<p>Differential Pinion Oil seal</p>	 A cylindrical metal oil seal with a central bore and a lip on the outer edge, used to prevent oil leakage from the differential.
<p>Outer Door Handle</p>	 A black plastic door handle with a curved shape and mounting tabs, designed for the outer door.
<p>Side Sliding Door Lower Runner</p>	 A black metal lower runner for a sliding door, featuring a curved shape and a small white plastic cap at the end.
<p>Front Headlamp Assem.</p>	 A front headlamp assembly with a clear lens, multiple lenses, and a chrome housing, including a turn signal indicator.
<p>Rear Tail Lamp Van</p>	 A red rear tail lamp with a clear lens and a chrome housing, designed for a van.



Rear Tail Lamp Chassis Cab



Side Marker Amber Lens



Mirror Head Complete



Mirror Glass Large



Mirror Glass Small



Mirror Side Marker Lamp



Mirror Marker Lamp Bulb & Holder



Rear Number Plate Light



Wiper Blade Kit



12volt Disc Horn



