

M.A.N L2000 Spares

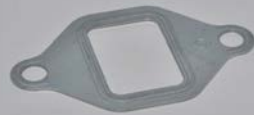
Cylinder Head Gasket Kit



Water Rail Gasket








Exhaust Manifold Gasket



Rocker Cover Gasket



| | |
|---------------------------------------------|-------------------------------------------------------------------------------------------------------------------------------------------------------------------------------------------|
| <p>Inlet Manifold Gasket</p> |  A dark grey, rectangular gasket with rounded corners and two circular mounting holes on opposite sides. |
| <p>Exhaust Manifold Bolt Torx</p> |  A copper-colored Torx bolt with a hexagonal head and a threaded shaft. |
| <p>Alternator Twin Belt Pulley</p> |  A metal pulley with two V-shaped grooves on its outer rim and a central hole. |
| <p>Flywheel Sprigot Bearing</p> |  A cylindrical roller bearing with a central hole and a smooth outer ring. |
| <p>Engine Temperature Sensor Alloy Type</p> |  A metal temperature sensor with a red plastic protective cap and a threaded base. |

| | |
|-------------------------------------------------|--------------------------------------------------------------------------------------------------------------------------------------------------------------------------------------------------------------------------------------------------|
| <p>Fuel Pre Filter Kit inc. Bowl & Seal</p> |  A fuel pre-filter kit consisting of a white plastic bowl and a metal frame with a white filter element inside. The metal frame has a red O-ring at the bottom. |
| <p>Fuel Pre Filter Element</p> |  A metal frame with a white filter element inside, similar to the one in the first row, but without the bowl. |
| <p>Fuel lift Pump & O-Ring</p> |  A fuel lift pump assembly with a silver metal body, a red cap, and a black O-ring. It has a white lever on the side. |
| <p>Header Tank Cap</p> |  A black plastic header tank cap with a central protrusion and a small handle on the side. |
| <p>Turbocharger Oil Return Hose</p> |  A red cylindrical turbocharger oil return hose with a black O-ring at the top. The number '51-5' is printed on the side. |

Compressor Flexible Pipe



Clutch Master Cylinder



Clutch Slave Cylinder & Release Bearing



Gear Linkage Ball Joint




Gear Linkage Ball Joint L & R Thread



| | |
|-----------------------------------------------|---------------------------------------------------------------------------------------------------------------------------------------------------------------------------------------------------------------------------------------------------------|
| <p>Front Spring Bump Stop</p> |  A black, cylindrical component with a split, C-shaped design, used as a bump stop for the front spring. |
| <p>Rear Anti-Roll Bar Bush Rubber</p> |  A black, cylindrical bush with a central hole, designed for use with a rubber insert. |
| <p>Rear Anti-Roll Bar Bush Metal / Rubber</p> |  A black, cylindrical bush with a central hole, designed for use with a metal insert. |
| <p>Rear Anti-Roll Bar Eye Bush</p> |  A black, cylindrical bush with a central hole and a wider, flange-like section on one end. |
| <p>Spring Eye Bush</p> |  A black, cylindrical bush with a central hole and a wider, flange-like section on one end, similar to the Rear Anti-Roll Bar Eye Bush but with a different profile. |

| | |
|-------------------------------------------|-----------------------------------------------------------------------------------------------------------------------------------------------------------------------------------------|
| <p>Front Anti-Roll Bar Bush</p> |  A cylindrical metal bush with a central hole and a slightly wider, flanged end. |
| <p>Rear Spring Lower Helper Bump Stop</p> |  A dark, angular metal component with a flat top surface and two circular holes. |
| <p>Rear Spring Bump Stop</p> |  A dark, curved metal component with two brass-colored pins protruding from its base. |
| <p>Rear Shock Rubber Bush</p> |  A cylindrical metal bush with a central hole and a slightly wider, flanged end. |
| <p>Front Hub Inner Wheel Bearing</p> |  A metal wheel bearing assembly consisting of an inner ring and an outer ring with balls in between. |

| | |
|----------------------------------------------------|-----------------------------------------------------------------------------------------------------------------------------------------------------------------------------------------------------------------------|
| <p>Front Hub Outer Wheel Bearing</p> |  A cylindrical metal wheel bearing with a central hub and an outer ring with a series of teeth. |
| <p>Front Hub Inner Hub Oil Seal & ABS Ring</p> |  A circular metal ring with a central hole and a series of teeth around the outer edge. |
| <p>Rear Brake Expander Rubber Boot</p> |  A white, dome-shaped rubber boot with a central hole and a flange around the base. |
| <p>Brake Caliper Slide Repair Kit</p> |  A collection of various metal and plastic parts, including pins, springs, and bushings, used for repairing a brake caliper slide. |
| <p>Air Dryer Filter Element</p> |  A cylindrical black air filter with a metal base and a top cap, used for filtering air in a vehicle's air system. |

| | |
|-----------------------------------------|---------------------------------------------------------------------------------------------------------------------------------------------------------------------------------------------------------------------------------------------------------------|
| <p>ABS Sensor Retainer</p> |  A metal ABS sensor retainer, which is a U-shaped component with a central slot and a mounting tab on one side. |
| <p>Rear Pinion Oil Seal 1999></p> |  A black, circular rear pinion oil seal with a central bore and a lip on the outer edge. |
| <p>Rear Hub Oil Seal >1999</p> |  A black, circular rear hub oil seal with a central bore and a lip on the outer edge, similar to the pinion seal but with a different profile. |
| <p>Rear Hub Sealed Bearing 1999></p> |  A rear hub sealed bearing, which is a cylindrical component with a central bore and a lip on the outer edge. |
| <p>Rear ABS Pulse Ring 2001></p> |  A rear ABS pulse ring, which is a cylindrical component with a central bore and a lip on the outer edge, featuring a series of teeth or notches around the circumference. |

Rear Hub Locking Nut 1999>



Rear Hub Green O-Ring



Rear Wheel Stud



Rear Electrical Junction Box



Heater Resistor



Steering Lock Assem & Loom



Steering Lock Ignition Key & Barrel



Complete Cab Lock Set



Door Handle & Keys



LED Side Marker Lamp



| | |
|------------------------------------------------|-------------------------------------------------------------------------------------|
| <p>Cab Side Marker Lamp</p> |  |
| <p>Front Indicator & Fog Lamp</p> |  |
| <p>Front Indicator & Reflector</p> |  |
| <p>Round Amber Reflector Screw Mounted</p> |  |
| <p>Rectangular Red Reflector Rear Rivet on</p> |  |

| | |
|---------------------------------------------|-------------------------------------------------------------------------------------------------------------------------------------------------------------------------------------------------------------|
| <p>Rectangular Amber Reflector Rivet on</p> |  A rectangular, orange-colored reflector with a textured surface, mounted on a white plastic base with two mounting holes. |
| <p>24 Volt Disc Horn</p> |  A circular, silver-colored disc horn with a black outer ring and a mounting tab on the side. |
| <p>Roof Marker Lamp</p> |  A rectangular, black roof marker lamp with a clear lens and a mounting bracket on the side. |
| <p>Exhaust Clamp Assorted Sizes</p> |  A single, silver-colored metal exhaust clamp with a sliding mechanism. |
| <p>Exhaust Clamp Assorted Sizes</p> |  Three silver-colored metal exhaust clamps of different sizes, arranged together. |

